

Adaptability and Resilience

The New Model of Employment

CWA Meeting of the Minds 2019
Monterey, CA



Agenda

Welcome and Introductions

Bertelsmann Foundation Study

Future of Work

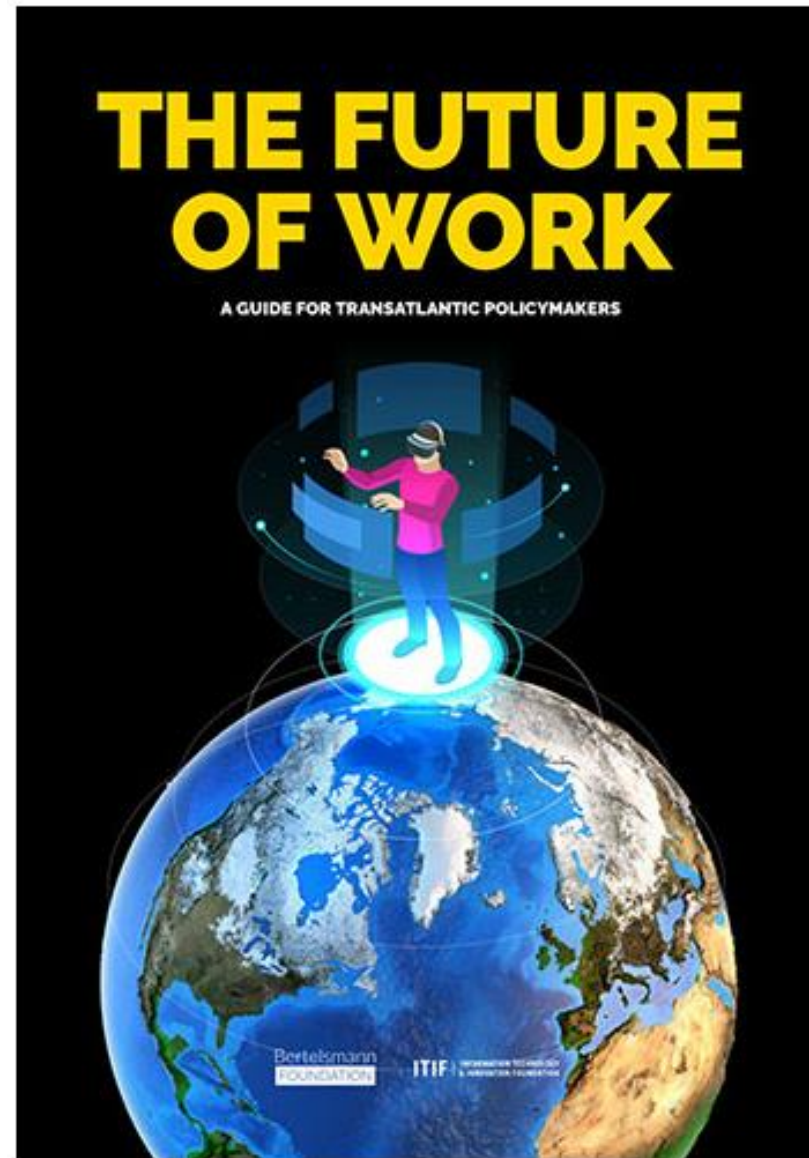
What Did You Learn?

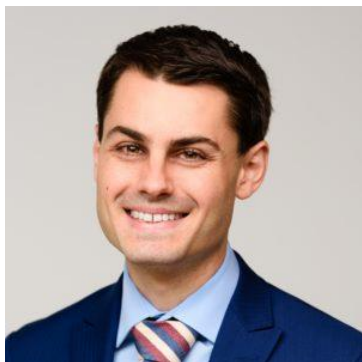
What Are You Doing Now?

What is Next?

How Can You Use the Study

Questions and Discussion





Jeffrey Brown

Manager, Future of Work &
Artificial Intelligence
jeffrey.brown@bfna.org



Irene Bustamante-Adams

Chief Strategy Officer
Workforce Connections
iba@nvworkforceconnections.org



Ron Painter

Chief Executive Officer
National Association of
Workforce Boards
Painterr@nawb.org



Jamil Dada

Chairperson
Riverside County Workforce
Development Board
jdada@myprovident.com



Angela Pate

Business Development
Public Consulting Group
Apate@pcgus.com



Future of Work

Bertelsmann
FOUNDATION

The Future of Work: Las Vegas



Las Vegas's "pioneering mentality" dictates its attitudes towards work, workforce development, and the future of work, and its policymakers' hands-off approach to the workforce has led to few long-term investments in education, training, and workforce development. In partnership with the National Association of Workforce Boards (NAWB), we attempt to answer how the future of work will impact Las Vegas.

[READ HERE](#)



New Content! A new investigation by the Bertelsmann Foundation, in partnership with the National Association of Workforce Boards (NAWB), attempts to answer how the future of work will impact Riverside and its workers specifically via a microsite, [The Future of Work: Riverside](#).



- **Angela - What did you learn?**
- **Ron - What are we/you doing now?**
- **Ron & Jeffrey - What is next?**



Questions, Comments, Discuss...





PUBLIC
CONSULTING GROUP

Solutions that Matter